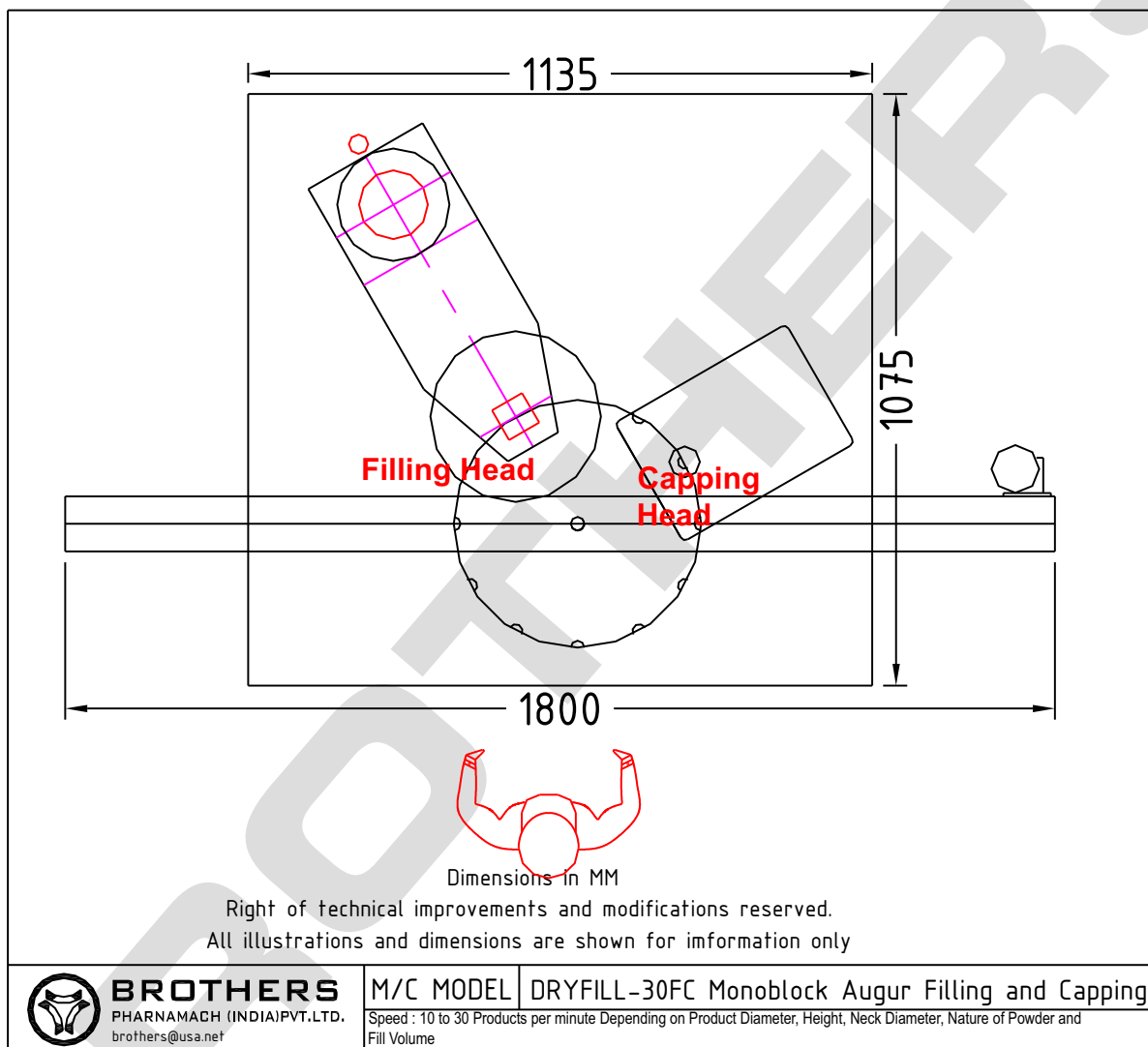




Dry Syrup Powder Filling with Capping Machine

DRYFILL-30^{FC} Automatic Single Head Augur type Dry Syrup Powder Filling Machine

The Automatic Linear Monoblock Single Head Augur type Dry Syrup Powder Filling and Capping Machine Model DRYFILL-30^{FC}, is suitable for Filling Dry Syrup Powder in various type and shape of bottles with maximum speed of 30 Bottles per minute depending on Fill Volume, type of Powder, Bottle Size and Cap Size. Machine with proven Augur type Powder Filling System for filling higher grammage of Powder in Single Dose. All Parts coming in contact with powder are made from SS316, Nylon and HDPE material. Machine with no change parts system for change in Size of Bottles due to pneumatically operated bottle separator system and only Star Wheel Require for Capping station for change in bottle size. Machine with built in Turn Table for Round Bottle at the infeed for continues feeding of bottles.



SPECIAL / OPTIONAL* FEATURES :

- No Bottle - No Fill System
- All contact parts made of SS316 and Nylon/HDPE material with easy removal system for Cleaning
- Machine construction in SS304 material
- A. C. Variable Frequency Drive Speed Control
- Filling Accuracy of +/- 2% to 3% depending on powder at controlled humidity below 30% Rh
- Built in Turn Tables with Separate Drive for speed control
- Low Air - Machine Stop System
- Automatic Cap Feeder On Off system
- Low Cap - Machine Stop System
- Heavy Duty Mounting system for Powder Wheel for Trouble Free long term operations

TECHNICAL SPECIFICATIONS

Product Diameter : 25mm to 85mm*

Product Height : 100mm* Maximum

Fill Range : 5gms. To 60gms. In Single Dose System

Cap : any type of ROPP or Screw Cap, Sample required for evaluation

Accuracy : +/- 2 to 3% Depending upon the Powder, under the controlled level of Humidity

Humidity : Below 30% Rh required on machine to be arrange by customer

Electrical : 415VAC 3Phase and 220 VAC Single Phase Power Supply (50 Hz) with A.C. Drive

Power : 2.0 H.P.

Conveyor Height : 815-940 mm

Overall Dimensions : 1800 mm (L) x 900 mm (W) x 1900 mm

Speed : Max. 30 Bottles per minute depending on Bottle Size, Bottle Neck Diameter, Type of Powder, Fill Volume, Type of Cap and Cap Size.

* Specification can be changed as per customers requirements

BROTHERS PHARMAMACH (INDIA) PVT. LTD.

Plot No.2, Phase II, GIDC, Vatva, Ahmedabad 382445. INDIA
Phone : +91 79 40213213, 25831346 Fax: +91 79 40213220
+91 9825037971, 9825006052

Email : info@brothers.in mevada@usa.net Website : www.brothers.in